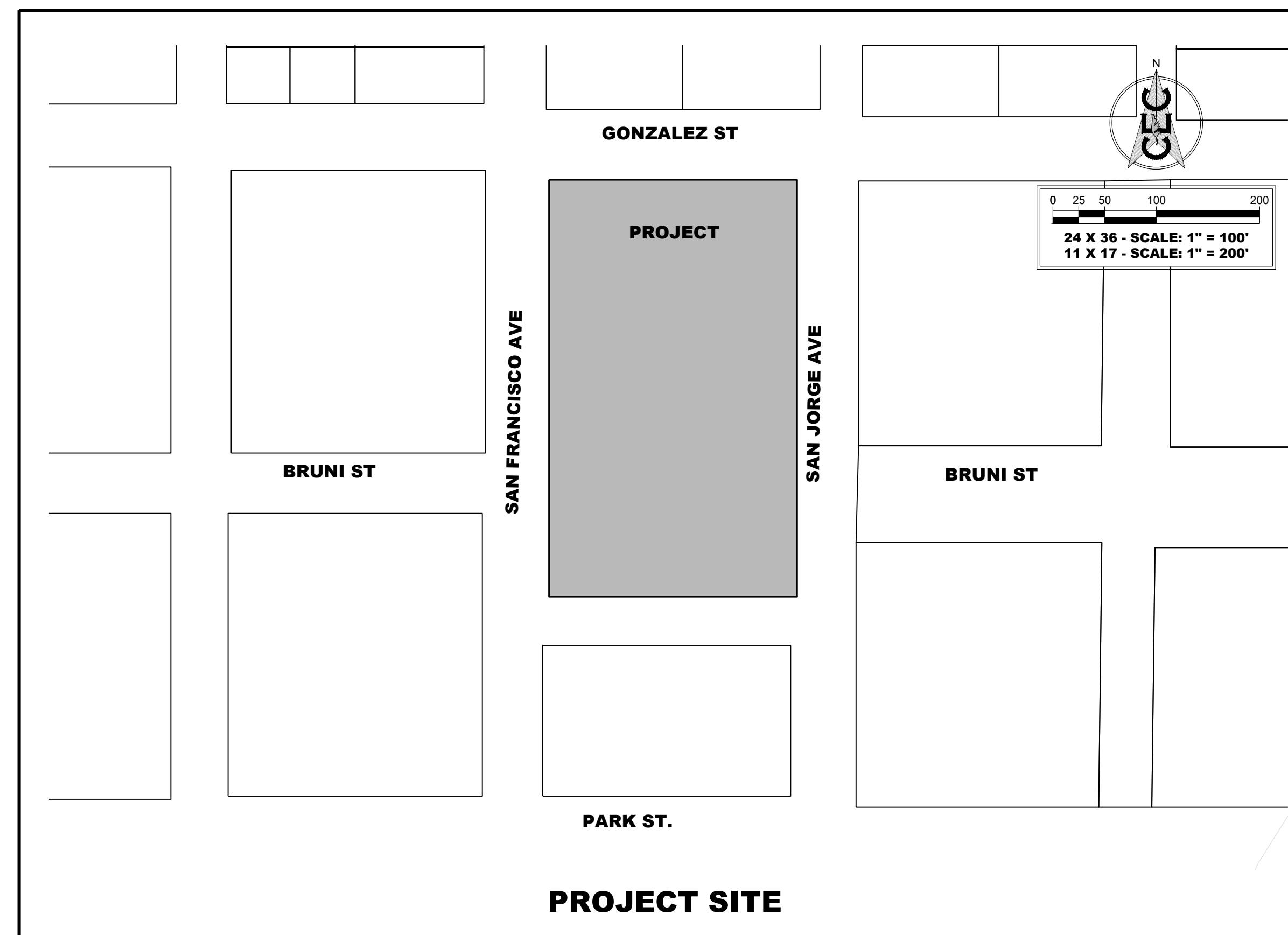
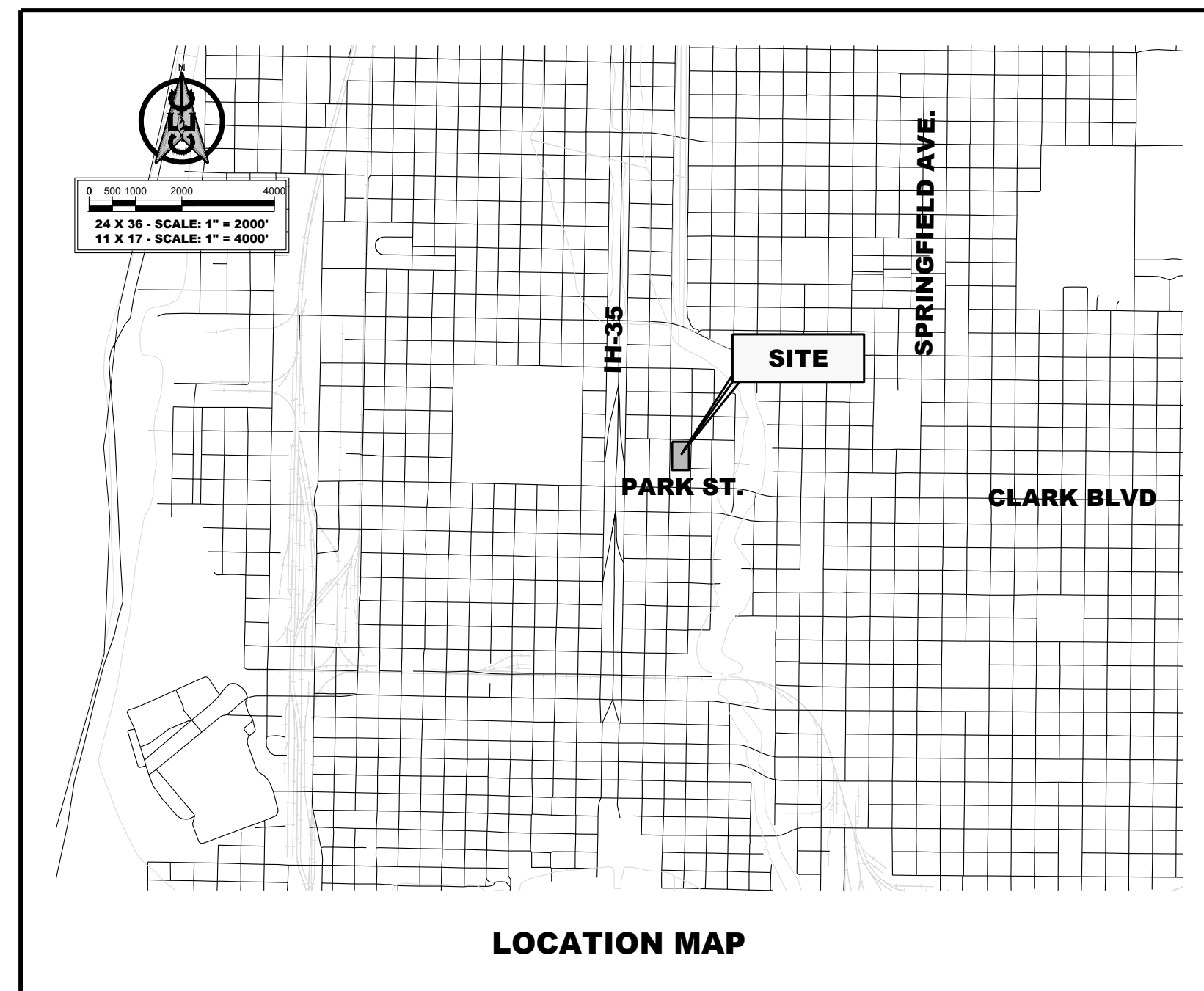



PROJECT	E0668600
PLOT DATE/TIME	5/14/2021 2:22 PM
STATUS	100% SET
DRAWN BY	CHECKED BY

# CONSTRUCTION PLANS FOR LHA- ADMINISTRATIVE CAMPUS PARKING LOT



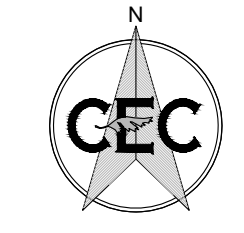
Sheet List Table	
Sheet Number	Sheet Title
1	COVER
2	GENERAL NOTES AND SURVEY CONTROL DATA
3	EXISTING SITE PLAN
4	DEMOLITION PLAN
5	SITE AND DIMENSIONAL PLAN 1 OF 2
6	SITE AND DIMENSIONAL PLAN 2 OF 2
7	GRADING PLAN
8	STORM WATER POLLUTION PREVENTION PLAN
9	DETAILS

  
**CIVIL ENGINEERING CONSULTANTS**  
 7109 N. Bartlett Avenue, Suite 201  
 Laredo, Texas, 78041  
 TEL: 956-729-7844 FAX: 956-729-7854  
 TBPE # F-2214 TBPS # 100410-00

  
**LAREDO HOUSING AUTHORITY**  
 Serving. Collaborating. Empowering.

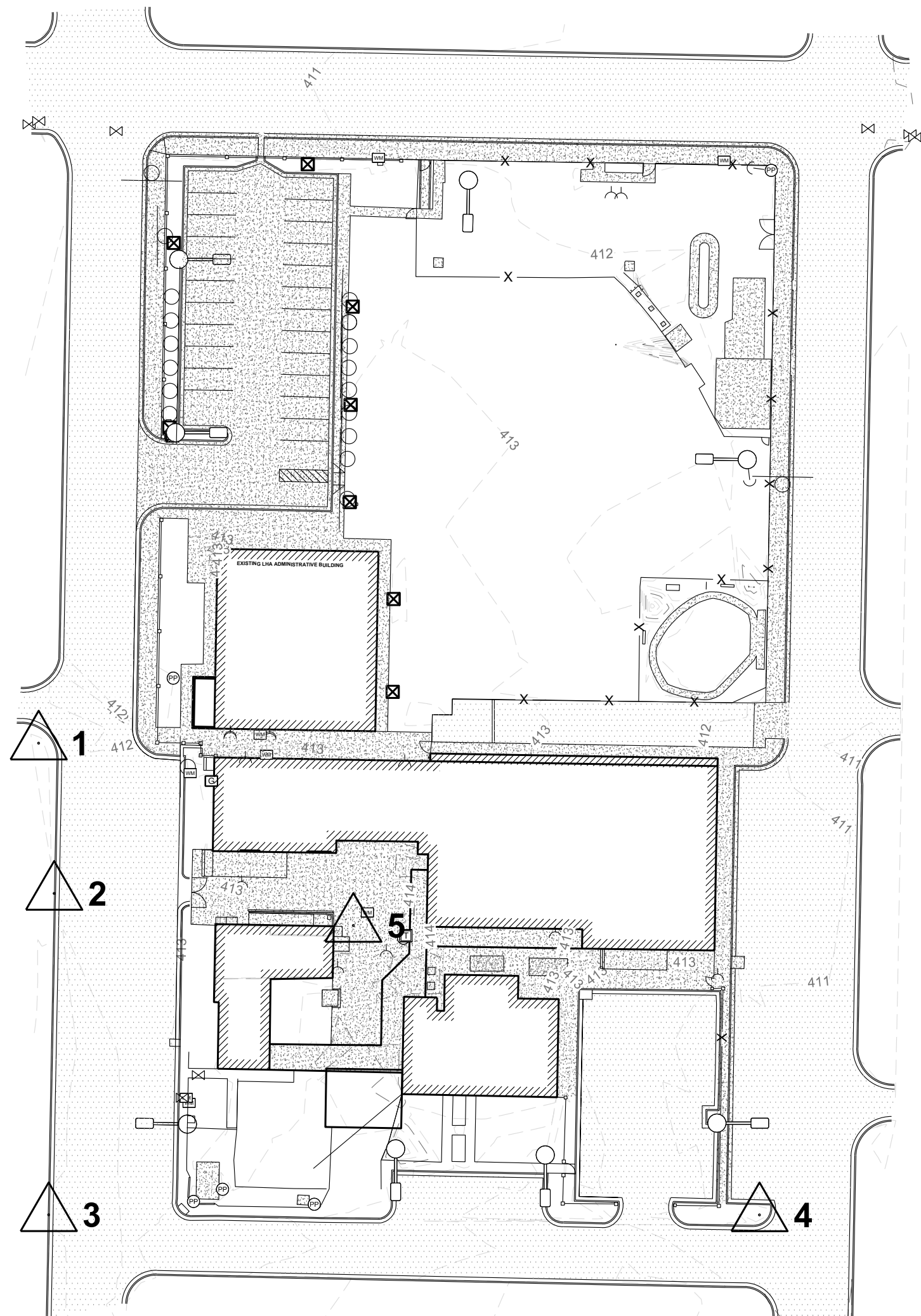
**LAREDO HOUSING AUTHORITY**  
 2000 SAN FRANCISCO AVE.  
 LAREDO, TX 78040  
 (956)-722-4521

S:\data\Proj\_2021\E0668600\_LHA-Administrative Campus\civil\lha\0668600\_COVER.dwg



24" X 36" SHEET - SCALE: 1" = 10'  
11" X 17" SHEET - SCALE: 1" = 20'

POINT #	NORTHING	EASTING	DESC.
1	17078480.02	659915.67	60D NAIL CP1
2	17078418.31	659922.04	60D NAIL CP2
3	17078286.35	659919.81	LHA GUADALUPE CP 1
4	17078286.29	660211.61	LHA GUADALUPE CP 2
5	17078405.14	660044.89	X MARK ON CONC



1 SURVEY CONTROL DATA  
SCALE: 1:50

ITEM	DESCRIPTION	QUANTITY	UNIT
<b>WATERLINE IMPROVEMENTS</b>			
1	MOBILIZATION	1	EA
2	TRAFFIC CONTROL	1	EA
3	DEMOLISH & DISPOSE CONCRETE SIDEWALK	1,465	SF
4	DEMOLISH AND DISPOSE CONCRETE PAVEMENT	11,633	SF
5	DEMOLISH & DISPOSE CRUB & GUTTER	587	LF
6	REMOVE & RELOCATE TRAFFIC SIGNS	1	EA
7	REMOVE & RELOCATE ADA PARKING SIGNS	14	EA
9	REMOVE FENCE	926	LF
11	CONCRETE SIDEWALK	1,051	SF
12	ADA RAMPS	7	EA
14	5' CONCRETE PAVEMENT	29,970	SF
15	TYPE 'A' CURB	1,500	LF
17	PROPOSED ACCESS GATE ARMS	2	EA
18	STRIPING - 4" YELLOW SOLID TY II	1,857	LF
19	STRIPING - BLUE ADA SYMBOL	4	EA
20	STRIPING - BLUE ADA LOADING ZONE	2	EA
21	STRIPING - CROSSWALK	75	LF

**GENERAL NOTES**

- CONTRACTOR IS REQUIRED TO VISIT SITE AND NOTIFY ENGINEER OF ANY DISCREPANCIES PRIOR TO PLACING A BID. BID SHALL BE ALL INCLUSIVE OF WORK REQUIRED TO COMPLETE THE PROJECT. NO CONSTRUCTION SHALL COMMENCE UNTIL PROPER CLEARANCES FROM THE ENGINEER/OWNER HAS BEEN OBTAINED. CONTRACTOR SHALL PROVIDE CONSTRUCTION STAKING AS REQUIRED FOR THE PROJECT.
- CONTRACTOR SHALL INCLUDE IN HIS BID ANY AND ALL NECESSARY TESTING PRIOR TO, DURING AND AFTER CONSTRUCTION ACTIVITIES.
- CONTRACTOR IS RESPONSIBLE FOR ACQUIRING ALL PERMITS AND PAYING ALL FEES AS REQUIRED.
- CONTRACTOR SHALL INCLUDE IN HIS BID CONSTRUCTION STAKE OUT.
- THE LOCATION OF ALL EXISTING UTILITIES SHOWN ON THESE PLANS HAS BEEN BASED UPON RECORD INFORMATION ONLY AND MAY NOT MATCH LOCATIONS AND/OR DEPTHS AS CONSTRUCTED. THE CONTRACTOR SHALL CONTACT EACH OF THE INDIVIDUAL UTILITY FOR ASSISTANCE IN DETERMINING EXISTING UTILITY LOCATIONS AND DEPTHS PRIOR TO BEGINNING ANY CONSTRUCTION. CONTRACTOR SHALL FIELD VERIFY LOCATIONS AND DEPTHS PRIOR TO BEGINNING ANY CONSTRUCTION. CONTRACTOR SHALL FIELD VERIFY LOCATIONS OF ALL UTILITY CROSSINGS (BOTH VERTICALLY AND HORIZONTALLY) PRIOR TO BEGINNING ANY CONSTRUCTION.
- PRIOR TO CONSTRUCTION, THE CONTRACTOR SHALL ENSURE THAT THE NOTICE OF INTENT (NOI), IF REQUIRED, HAS BEEN FILED AND POSTED ONSITE.
- THE CONTRACTOR IS RESPONSIBLE FOR PROTECTING EXISTING FACILITIES AND IMPROVEMENTS AS A RESULT OF THE CONTRACTOR'S WORK FROM DAMAGE. THE CONTRACTOR MUST NOTIFY THE ENGINEER AND THE OWNER IF UNINTENDED DAMAGE OR REMOVAL OCCURS TO EXISTING PAVEMENT, CURBS, BUILDINGS, SIGNS, SIDEWALKS, WALLS, FENCES, UTILITY INFRASTRUCTURE, TREES, AND ETC. THE CONTRACTOR MUST REPAIR/REPLACE ANY DAMAGED/REMOVED ITEMS TO EXISTING CONDITION AT HIS OWN EXPENSE.
- RIGHT-OF-WAY LINES SHOWN ARE SOLELY FOR REPRESENTATION; THESE PLANS DO NOT ATTEMPT TO REESTABLISH OR CONFIRM ANY PROPERTY OR EASEMENT LINES.

**DEMOLITION NOTES**

- THE CONTRACTOR SHALL BE RESPONSIBLE FOR THE DEMOLITION AND THE PROPER REMOVAL/DISPOSAL OF ALL ABOVE GROUND ITEMS INCLUDING BUT NOT LIMITED TO CONCRETE CHANNELS, IRRIGATION PIPES, IRRIGATION APPARATUS, TREES, TRASH, AND MISCELLANEOUS DEBRIS.
- CONTRACTOR SHALL CONTACT ALL UTILITY COMPANIES TO LOCATE THE EXISTING FACILITIES. CONTRACTOR IS RESPONSIBLE FOR COORDINATION WITH ALL UTILITY COMPANIES REGARDING REMOVAL OF EXISTING SERVICES VERIFYING UTILITIES ARE SHUT OFF OR DISCONNECTED, AND ALL POSSIBLE SAFETY PRECAUTIONS HAVE BEEN ENACTED TO ENSURE THE SAFEST ENVIRONMENT FOR ALL PERSONNEL.
- THE CONTRACTOR SHALL ENSURE THAT ALL REQUIRED PERMITS AND APPROVALS HAVE BEEN OBTAINED. NO CONSTRUCTION OR FABRICATION SHALL BEGIN UNTIL THE CONTRACTOR HAS RECEIVED AND THOROUGHLY REVIEWED ALL PLANS AND OTHER DOCUMENTS APPROVED BY ALL THE PERMITTING AUTHORITIES.

**SITE NOTES**

- ALL PROJECT COORDINATES ARE ESTABLISHED BASED ON THE PROVIDED CONTROL DATA ON THE CONTROL / BENCHMARK DATA SHEET.
- THE CONTRACTOR SHALL LAY OUT THE WORK FROM THE OWNER'S ESTABLISHED PROPERTY BOUNDARY CONTROL AND BENCHMARKS, AS INDICATED ON THE ENGINEER'S DIMENSION PLAN AND BENCHMARK & CONTROL DATA SHEET. THE CONTRACTOR SHALL COORDINATE ANY ADDITIONAL DIMENSIONS NEEDED WITH THE ENGINEER PRIOR TO CONSTRUCTION ACTIVITIES.
- RADIAL AND TYPICAL DIMENSIONS SHOWN ARE TAKEN FROM THE BACK OF CURB OR EDGE OF SIDEWALK, UNLESS OTHERWISE PRESENTED ON THIS PLAN. THE CONTRACTOR SHALL COORDINATE WITH THE ENGINEER AND ARCHITECT PRIOR TO MAKING ANY FIELD CHANGES THAT DIFFER FROM THIS DIMENSION PLAN.
- CONTRACTOR SHALL PROVIDE CONSTRUCTION STAKING AS REQUIRED.
- CONTRACTOR SHALL SAW-CUT AND/OR ADJUST EXISTING PAVEMENT AS NECESSARY TO ASSURE A SMOOTH AND CONTINUOUS TRANSITION GRADE TO PROPOSED PAVEMENT SURFACES.
- ALL PROJECT ELEVATIONS ARE ESTABLISHED BASED ON THE PROVIDED BENCHMARK ELEVATIONS ON THE CONTROL / BENCHMARK DATA PLAN. ALL ELEVATIONS, CONTOURS, AND GRADES SHOW THE ELEVATION OF THE EXISTING GROUND. THE CONTRACTOR SHALL TAKE INTO CONSIDERATION THE ROADWAY SECTIONS, BUILDING SUBGRADE PREPARATION, AND ANY OTHER ELEVATIONS NOT PART OF THE PROPOSED NATURAL GROUND WHEN MAKING CUT AND FILL CALCULATIONS. ALL GRADINGS OF PROPOSED NATURAL GROUND SHALL BE GRADED TO DRAIN AND SHALL NOT EXCEED 3:1 SLOPE UNLESS OTHERWISE NOTED ON THE PLANS.
- PAVEMENT MARKINGS AND SIGNAGE FOR ACCESSIBILITY SPACES, ROUTES AND RAMPS SHALL CONFORM TO THE REQUIREMENTS OF THE AMERICAN DISABILITIES ACT (ADA) AND THE TEXAS DEPARTMENT OF LICENSING AND REGULATIONS (TDLR) AND SHALL BE PAINTED BLUE AND WHITE IN ACCORDANCE WITH THE MOST RECENT ARCHITECTURAL BARRIERS REQUIREMENTS AND AS PER CIVIL STRIPING PLAN. PAVEMENT MARKINGS AND SIGNAGE SHALL BE PROVIDED BY THE CONTRACTOR AND COORDINATED WITH THE ENGINEER AND THE CITY OF LAREDO BUILDING DEPARTMENT.
- CONTRACTOR SHALL SAW-CUT AND/OR ADJUST EXISTING PAVEMENT AS NECESSARY TO ASSURE A SMOOTH AND CONTINUOUS TRANSITION GRADE.
- CONTRACTOR SHALL MAINTAIN ALL EXISTING DRAINAGE CONDITIONS DURING ALL CONSTRUCTION PHASES OF THE PROJECT UNTIL THE PERMANENT DRAINAGE FACILITIES ARE CONSTRUCTED AND READY TO USE. HANDLE ALL EXCAVATED AND STOCKPILED MATERIAL IN SUCH A WAY THAT IT WILL NOT BLOCK DRAINAGE OR DAMAGE EXISTING ENVIRONMENTAL ITEMS.
- THE CONTRACTOR SHALL INCLUDE IN HIS BID ALL REQUIREMENTS SET FORTH BY THE GEOTECHNICAL REPORT. ALL DEWATERING AND ROCK CUTTING MEASURES SHALL BE PART OF BASE BID UNLESS OTHERWISE IDENTIFIED ON THE PLANS.
- CONTRACTOR SHALL ENSURE THE SAFETY OF WORKERS DURING EXCAVATION ACTIVITIES. THE CONTRACTOR SHALL INSTALL TRENCH SAFETY MEASURES WHEN TRENCHING MORE THAN 6 FEET OF DEPTH. TRENCHING MORE THAN 20 FEET OF DEPTH REQUIRES A PROTECTIVE SYSTEM DESIGNED BY A REGISTERED PROFESSIONAL ENGINEER OR BASED ON TABULATED DATA PREPARED AND/OR APPROVED BY A REGISTERED PROFESSIONAL ENGINEER IN ACCORDANCE WITH OSHA REGULATION 1926.652(b) AND (c).
- CONTRACTOR SHALL ADJUST ALL UTILITIES TO FINISH GRADE UNLESS NOTED OTHERWISE ON THESE PLANS.

**TRAFFIC CONTROL NOTES**

- CONTRACTOR SHALL SUBMIT TRAFFIC CONTROL PLAN TO CITY OF LAREDO FOR APPROVAL AND PROVIDE A COPY OF THE APPROVED PLAN TO THE ENGINEER.
- THE CONTRACTOR SHALL COORDINATE ALL TRAFFIC CONTROL ACTIVITIES WITH THE CITY OF LAREDO TRAFFIC DEPARTMENT. CONTRACTOR SHALL EMPLOY ALL TRAFFIC CONTROL DEVICES IN ACCORDANCE WITH THE TEXAS MANUAL OF UNIFORM CONTROL DEVICES FOR STREETS AND HIGHWAYS. IT IS THE RESPONSIBILITY OF THE CONTRACTOR TO PROVIDE ADEQUATE BARRICADES, WARNINGS, SIGNS, NOTIFICATION, AND TRAFFIC LIGHTING DEVICES FOR THE SAFETY AND TRAFFIC FLOW WITHIN THE CONSTRUCTION AREAS. ALL TRAFFIC CONTROL ACTIVITIES SHALL BE IN-PLACE PRIOR TO CONSTRUCTION OF THE PROPOSED DRIVEWAY AND SIDEWALK IMPROVEMENTS AND SHALL REMAIN IN-PLACE UNTIL SATISFACTORY COMPLETION OF THE IMPROVEMENTS HAS BEEN ACCOMPLISHED. THE CONTRACTOR SHALL BE RESPONSIBLE FOR MAINTENANCE OF TRAFFIC CONTROL DEVICES THROUGHOUT HIS ACTIVITIES.
- AT EXISTING ROADWAY TIES, THE CONTRACTOR SHALL SCHEDULE WORK SO THAT PLACEMENT OPERATIONS WILL FOLLOW THE SUB GRADE WORK AS CLOSELY AND AS PRACTICAL IN ORDER TO REDUCE HAZARD TO THE TRAVELING PUBLIC AND PREVENT UNDUE PAVEMENT DAMAGE FROM WET WEATHER.
- THE CONTRACTOR SHALL FURNISH AND INSTALL STOP SIGNS, STREET SIGNS AND OTHER REGULATORY SIGNS. THE LOCATIONS OF THE SIGNS SHALL BE DETERMINED BY THE ENGINEER AND APPROVED BY THE CITY. CITY OF LAREDO MAY ELECT TO IMPROVE ON APPROPRIATE SIGNAGE-STOP SIGNS, STREET SIGNS, SPEED LIMIT SIGNS, DECISIONS REGARDING SUCH IMPROVEMENTS WILL BE LEFT TO THE DISCRETION OF SAID CITY.
- ACCESS TO ALL DRIVES AND SIDE ROADS, BOTH PUBLIC AND PRIVATE, ARE TO BE MAINTAINED AT ALL TIMES.
- CONTRACTOR SHALL PROVIDE ADEQUATE BARRICADES WHILE WORKING ONSITE TO ENSURE SAFETY FOR THE PUBLIC.

**UTILITY NOTES**

- AS REQUIRED BY THE "TEXAS UNDERGROUND FACILITY DAMAGE PREVENTION AND SAFETY ACT", TEXAS ONE CALL MUST BE CONTACTED (800-245-4545) AT LEAST 48 HOURS PRIOR TO ANY EXCAVATION OPERATIONS PERFORMED. IT IS THE CONTRACTOR'S RESPONSIBILITY TO CONTACT TEXAS ONE CALL SYSTEM. CONTRACTOR SHALL BE AWARE THAT NOT ALL UTILITY COMPANIES MAY BE PART OF THE TEXAS ONE CALL SYSTEM. THE CONTRACTOR SHALL ENSURE TO COORDINATE AND VERIFY UTILITIES WITH ALL UTILITY COMPANIES HAVING JURISDICTION.
- THE CONTRACTOR SHALL COORDINATE ANY UTILITY WORK DONE WITHIN CITY R.O.W. INCLUDING BUT NOT LIMITED TO TRENCHING AND CONNECTING TO EXISTING UTILITY INFRASTRUCTURE. THE CONTRACTOR IS RESPONSIBLE FOR RETURNING TO EXISTING CONDITION ALL UTILITY DAMAGES. IN THE CASE OF A UTILITY CONNECTION, THE CONTRACTOR SHALL INSTALL ANY CONNECTIONS AS PER THE CITY OF LAREDO STANDARD TECHNICAL SPECIFICATIONS MANUAL.
- THE CONTRACTOR SHALL COORDINATE THE INTENDED IMPROVEMENTS WITH ALL UTILITY COMPANIES HAVING JURISDICTION IN THE PROJECT SITE. LOCATIONS OF UTILITIES SHOWN ON THESE PLANS WERE DERIVED FROM BEST AVAILABLE SOURCES AND FIELD SURVEYS AND REPRESENT THE ENGINEER'S BEST ATTEMPT TO RECREATE EXISTING CONDITIONS. ULTIMATELY, THE CONTRACTOR SHALL BE RESPONSIBLE FOR DETERMINING EXACT LOCATION, DEPTH, AND SIZES OF ALL UNDERGROUND UTILITIES AND STRUCTURES PRIOR TO CONSTRUCTION AND MAKE PROVISIONS FOR THEIR PROTECTION.
- THE CONTRACTOR SHALL SUBMIT TO THE ENGINEER FOR APPROVAL ANY FIELD CHANGES PERFORMED TO ACHIEVE THE DESIGN REQUIRED.
- ANY DAMAGE TO CITY OR PRIVATE UTILITY LINES SHALL BE IMMEDIATELY REPORTED TO THE ENGINEER, THE CITY AND/OR APPROPRIATE UTILITY COMPANY. REPAIRS TO THESE UTILITY LINES WILL BE AT THE DIRECTION OF THE CITY AND/OR THE UTILITY COMPANY AFFECTED AND WILL BE AT THE CONTRACTOR'S EXPENSE. THE CONTRACTOR SHALL BE LIABLE FOR ANY DAMAGES OR DOWNTIME CAUSED BY DAMAGE TO UTILITIES.
- THE CONTRACTOR SHALL PROVIDE PRIMARY AND SECONDARY TRENCHING AND BACKFILL FOR THE UTILITY COMPANIES, AS REQUIRED.
- ERECTION AND/OR REMOVAL OF POLES AND LUMINARIES LOCATED NEAR ANY OVERHEAD OR UNDERGROUND ELECTRICAL LINES SHALL BE ACCOMPLISHED USING ESTABLISHED INDUSTRY AND UTILITY SAFETY PRACTICES AND SHALL COMPLY WITH TEXAS STATE LAW AND FEDERAL REGULATIONS. THE CONTRACTOR SHALL CONSULT WITH THE APPROPRIATE UTILITY COMPANY PRIOR TO BEGINNING SUCH WORK.
- CONTRACTOR SHALL INCLUDE IN HIS BID THE REQUIRED ADJUSTMENT OF ALL VALVES, VALVE COVERS, MANHOLE LIDS, FIRE HYDRANTS, CLEANOUTS, AND ANY OTHER MISC. UTILITY ITEM WHETHER SHOWN ON THESE PLANS OR NOT.
- IF ANY OVERHEAD OR UNDERGROUND ELECTRICAL LINES NEED TO BE DE-ENERGIZED, THE CONTRACTOR SHALL CALL THE POWER COMPANY TO DO THIS WORK.
- THE CONTRACTOR SHALL MAINTAIN MINIMUM THE WALL-TO-WALL SEPARATION BETWEEN SEWER AND WATER UTILITIES AS REQUIRED BY TCEQ REGULATIONS. IT IS THE CONTRACTOR'S RESPONSIBILITY TO VERIFY ALL TCEQ REGULATIONS PRIOR TO UTILITY WORK.
- CONTRACTOR SHALL INCLUDE IN HIS BID ALL COSTS ASSOCIATED WITH RELOCATION AND EXTENSION OF SERVICES WITHIN THE PROJECT AREA INCLUDING GAS, TELEPHONE, DATA, CABLE, AND ELECTRICAL.
- DUE TO FEDERAL REGULATION TITLE 49, PART 192.81, CENTER POINT ENERGY MUST MAINTAIN ACCESS TO GAS VALVES AT ALL TIMES. THE CONTRACTOR MUST PROTECT AND WORK AROUND ANY GAS VALVES THAT ARE IN THE PROJECT AREA.

**STORM WATER POLLUTION PREVENTION PLAN NOTES**

- CONTRACTOR SHALL INSTALL STORM WATER POLLUTION PREVENTION CONTROLS AND SUBMIT NOTICE OF INTENT PRIOR TO ANY SITE PREPARATION WORK (DEMOLITION, EXCAVATION, GRUBBING, ETC.)
- CITY OF LAREDO MAY ELECT TO IMPROVE ON APPROPRIATE SILT FENCING LAYOUT AS SHOWN. DECISIONS REGARDING SUCH IMPROVEMENTS WILL BE LEFT TO THE DISCRETION OF SAID ENTITY. THE CITY SHALL CONSULT WITH ENGINEER PRIOR TO ANY MODIFICATIONS TO THE SILT FENCING LAYOUT.

PROJECT: E0668600  
PLOT DATE/TIME: 7/2/2021 3:26 PM  
STATUS: 100% SET  
DRAWN BY: O.A.R. CHECKED BY: J.F.G.

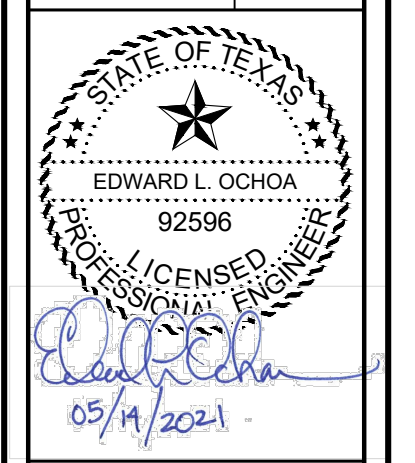
NO.	DATE	REVISION DESCRIPTION

FILE: E0668600\_NOTES.dwg  
SHEET 1 OF 2  
SHEET 2 OF 2

**CIVIL ENGINEERING CONSULTANTS**  
7100 Laredo, Texas, 78041  
TEL: 956-729-7844 FAX: 956-729-7854  
TBPE # F-2214 TBPS # 100416-00

**LHA- ADMINISTRATIVE CAMPUS PARKING LOT**

**GENERAL NOTES AND SURVEY CONTROL DATA**

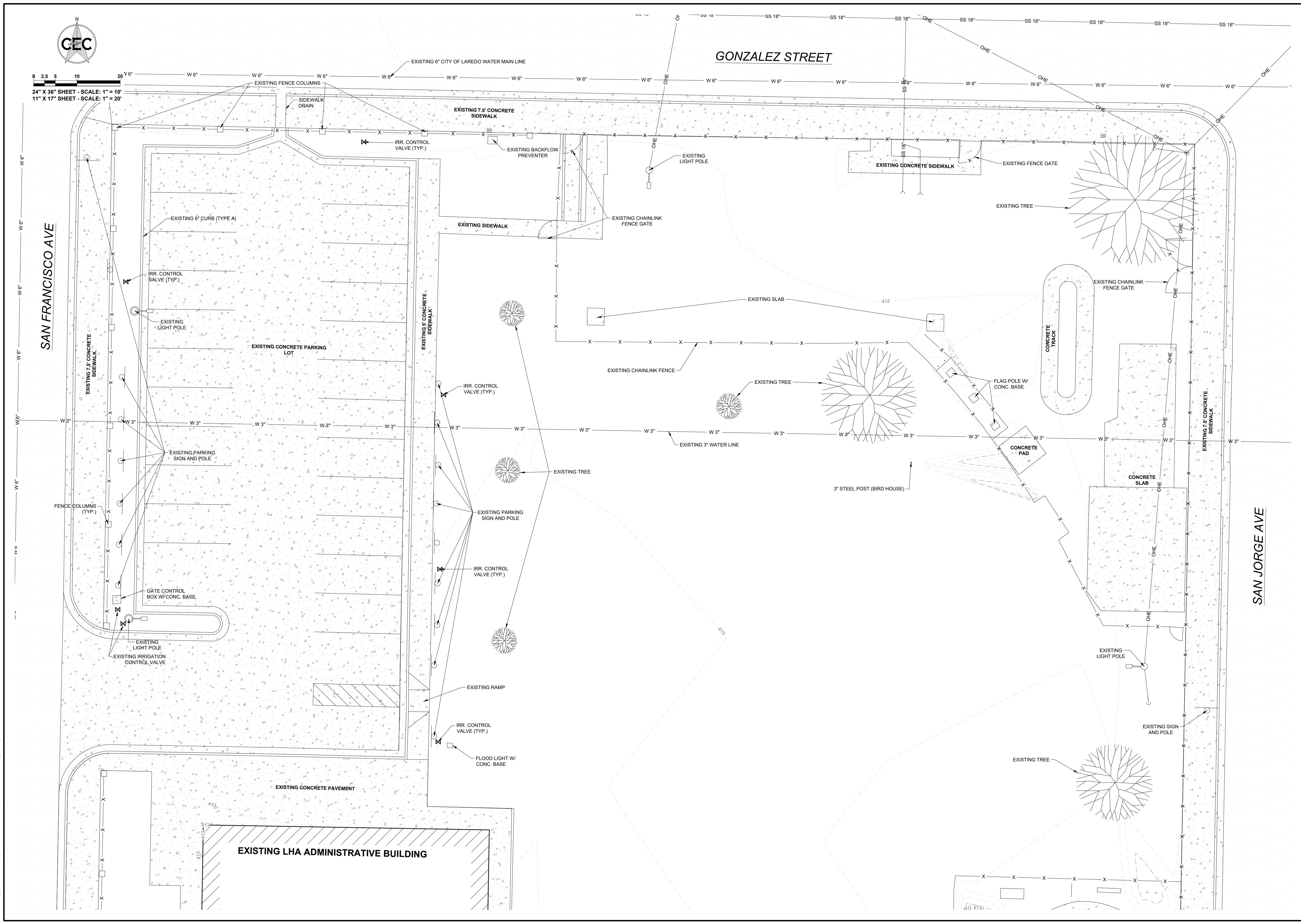


2

SHEET

2 OF 9

SitePlanProj\_2021/E0668600\_LHA-Administrative Campus/plan/E0668600\_EX.dwg



**CEC**

24" X 36" SHEET - SCALE: 1" = 10'  
11" X 17" SHEET - SCALE: 1" = 20'

0 2.5 5 10 20

PROJECT	E0668600	
PLANT DATE/TIME	5/14/2021 2:22 PM	
STATUS	100% SET	
DRAWN BY	O.A.R.	
CHECKED BY	J.F.G.	
NO.	DATE	REVISION DESCRIPTION
FILE		E0668600_EX.dwg
REF. 1		
REF. 2		

**CEC**

CIVIL ENGINEERING CONSULTANTS  
1709 Laredo, Texas, 78041  
TEL: 956-729-7844 FAX: 956-729-7854  
TBPE # F-2214 TBPS # 100410-00

PROJECT NAME  
**LHA- ADMINISTRATIVE CAMPUS PARKING LOT**

SHEET TITLE  
**EXISTING SITE PLAN**

STATE OF TEXAS

EDWARD L. OCHOA

92596

PROFESSIONAL ENGINEER

05/14/2021

**3**

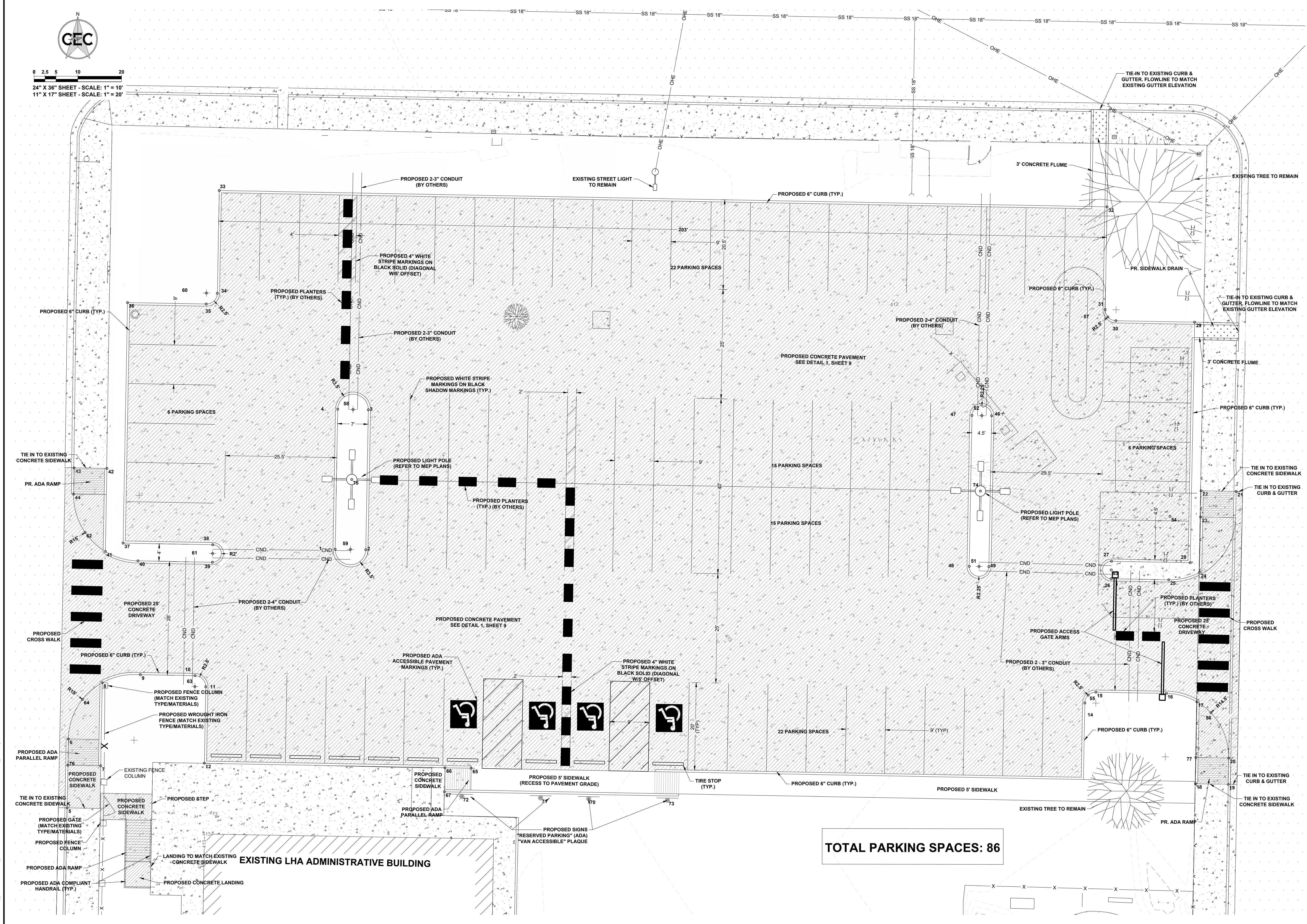
SHEET

3 OF 9





0 2.5 5 10 20  
 24" X 36" SHEET - SCALE: 1" = 10'  
 11" X 17" SHEET - SCALE: 1" = 20'



**TOTAL PARKING SPACES: 86**

PROJECT	E0668600
DATE/TIME	7/2/2021 3:21 PM
STATUS	100% SET
DRAWN BY	O.A.R.
CHECKED BY	J.F.G.
NO. DATE	REVISION DESCRIPTION
FILE	E0668600_PR.dwg
SHEET #	5
TOTAL SHEETS	9

**CEC**  
 CIVIL ENGINEERING CONSULTANTS  
 7109 Lunderwood, Suite 201  
 Dallas, Texas, 75241  
 TEL: 956-729-7844 FAX: 956-729-7854  
 TBP# F-2214 TEP# 100410-00

**LHA- ADMINISTRATIVE CAMPUS PARKING LOT**

**SITE AND DIMENSIONAL PLAN 1 OF 2**

STATE OF TEXAS  
 EDWARD L. OCHOA  
 92596  
 PROFESSIONAL ENGINEER  
 05/11/2021

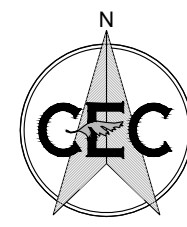
  

**5**  
 SHEET  
 5 OF 9

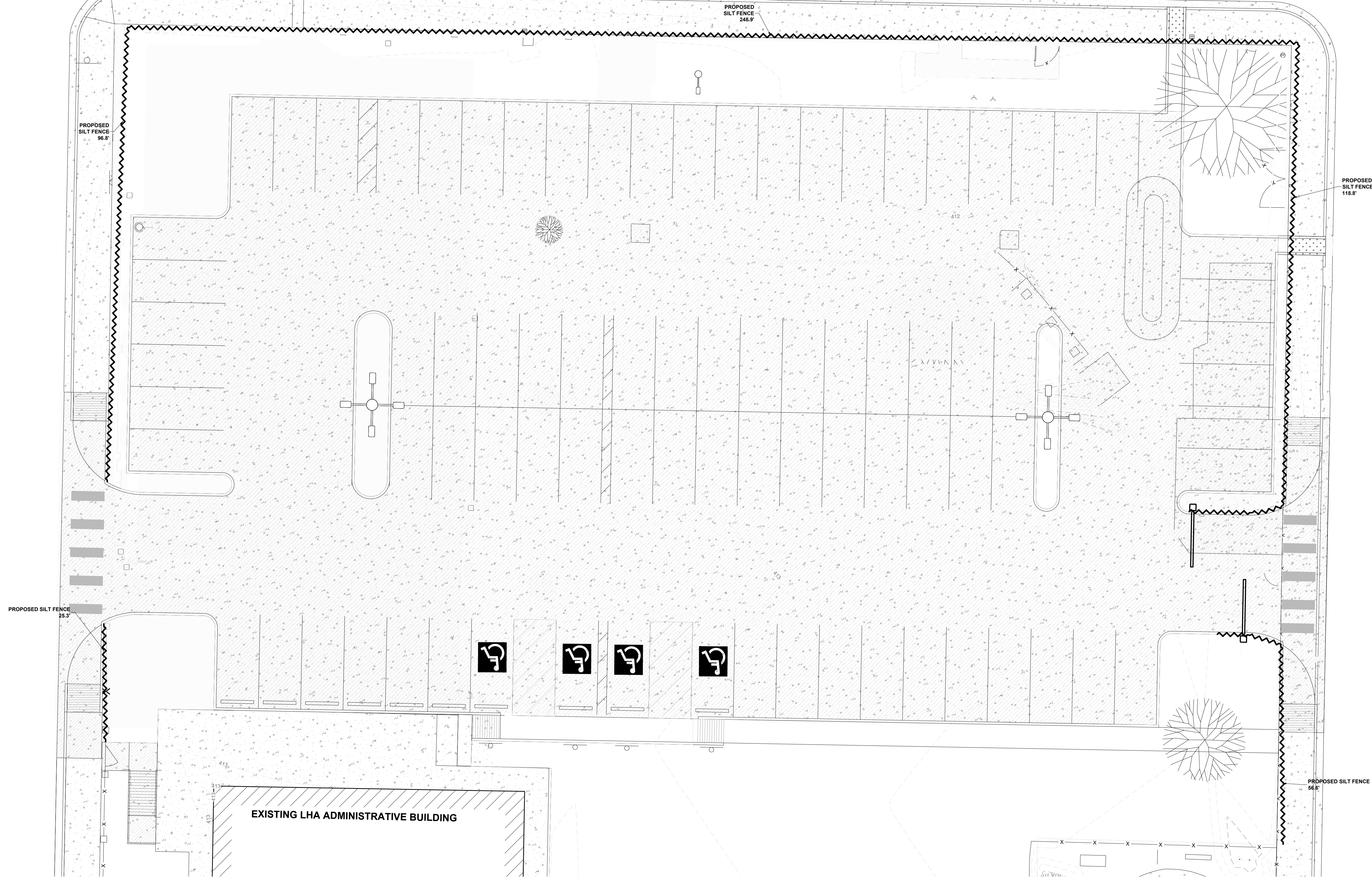
S:\data\proj\_2021\E0668600\_LHA-Administrative Campus\land\E0668600\_PR.dwg







0 2.5 5 10 20  
 24" X 36" SHEET - SCALE: 1" = 10'  
 11" X 17" SHEET - SCALE: 1" = 20'



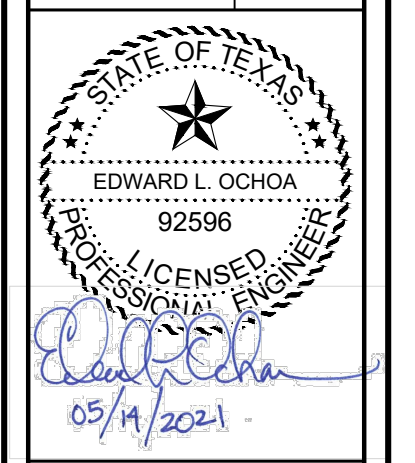
PROJECT	E0668600
PLOT DATE/TIME	7/2/2021 3:21 PM
STATUS	100% SET
DRAWN BY	O.A.R.
CHECKED BY	J.F.G.

NO.	DATE	REVISION DESCRIPTION
FILE		E0668600_SVPPP.dwg
REF. 1		
REF. 2		

**CEC**  
 CIVIL ENGINEERING CONSULTANTS  
 7109 Lureso, Texas, 78041  
 TEL: 956-729-7844 FAX: 956-729-7854  
 TBP# F-2214 TBP# 100410-00

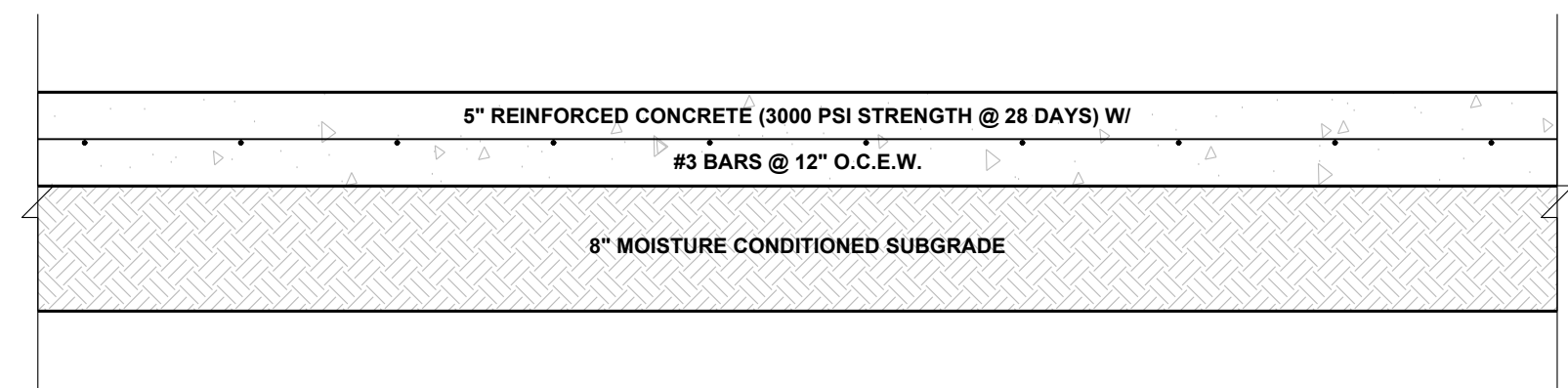
PROJECT NAME  
**LHA- ADMINISTRATIVE CAMPUS PARKING LOT**

SHEET TITLE  
**STORM WATER POLLUTION PREVENTION PLAN**

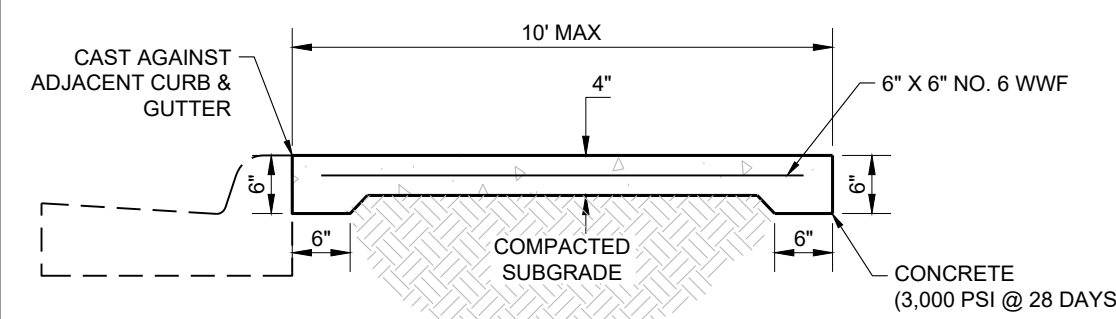


S:\data\Proj\_2021\E0668600\_LHA-Administrative Campus\cad\E0668600\_SVPPP.dwg



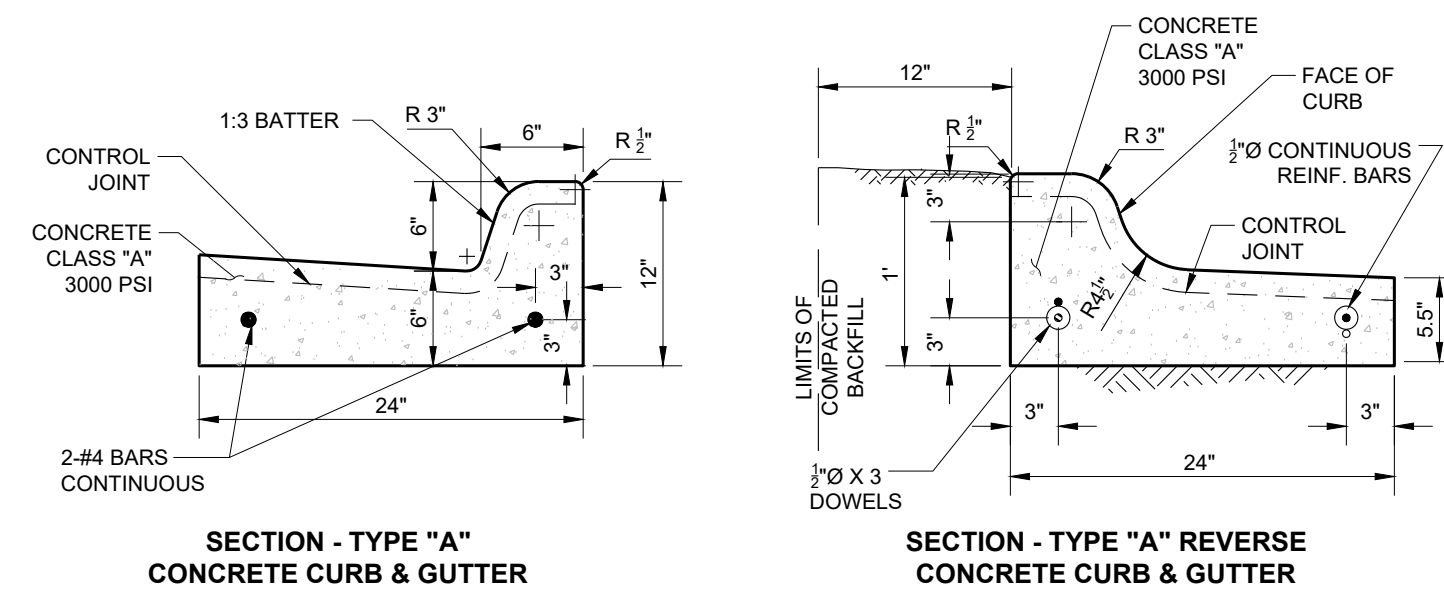


**1 CONCRETE PAVEMENT TYPICAL SECTION**  
SCALE: N.T.S.



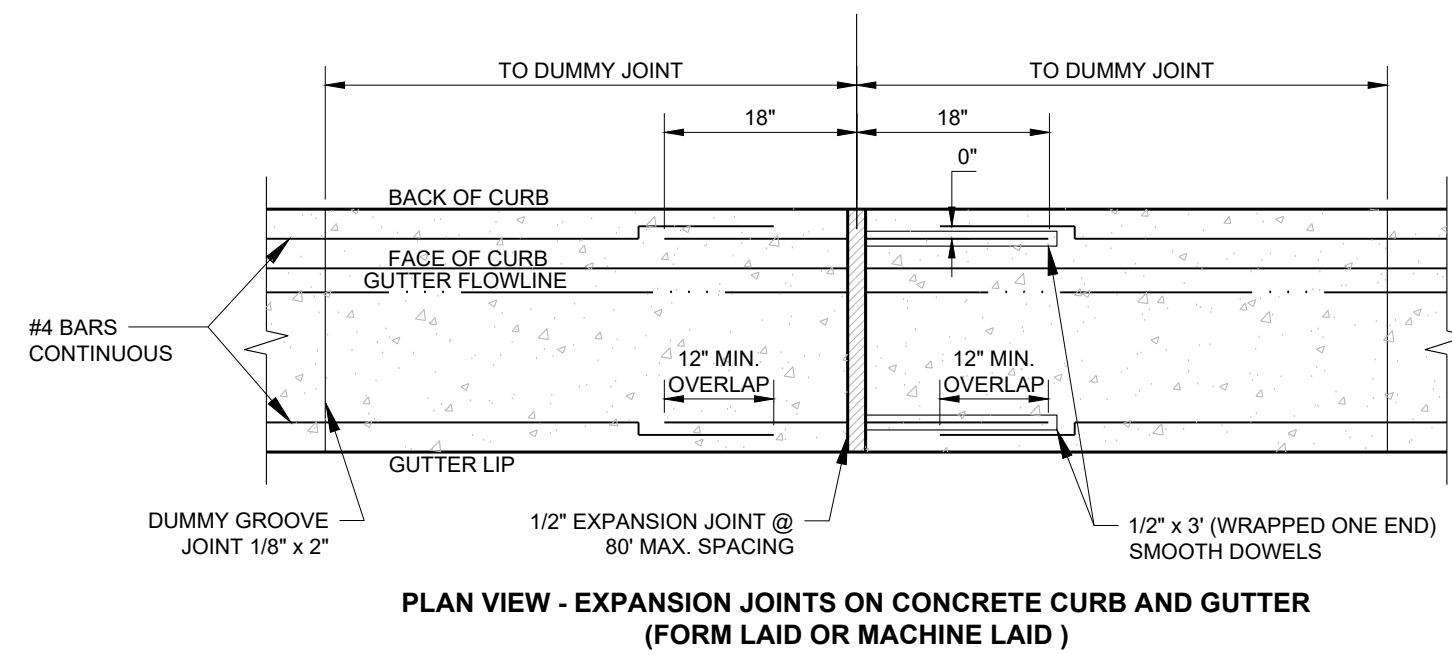
NOTE: PROVIDE TRANSVERSE DUMMY JOINTS AT A SPACING EQUAL TO SIDEWALK WIDTH BUT NOT LESS THAN 3'

**2 CONCRETE SIDEWALK (UP TO 10')**  
SCALE: N.T.S.



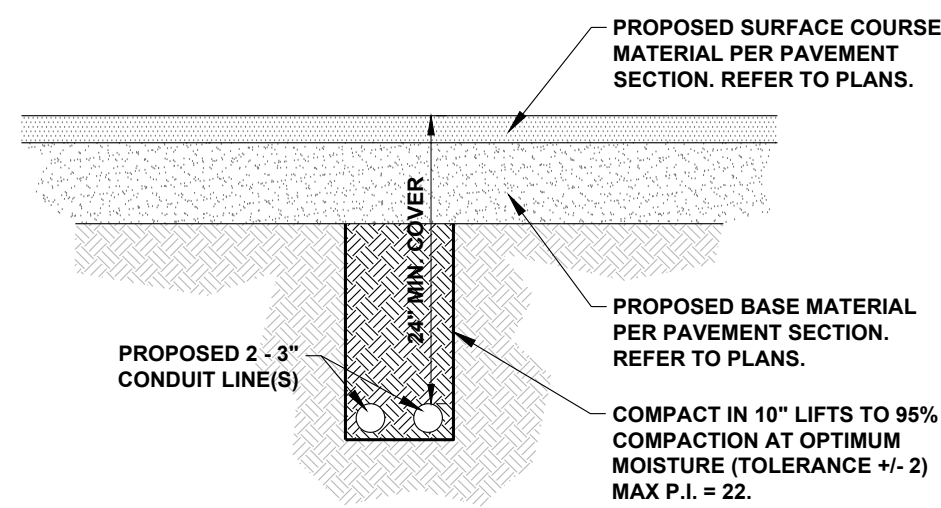
**3 CONCRETE CURB & GUTTER**  
SCALE: N.T.S.

\* CURB TO BE POURED MONOLITHICALLY WITH CONCRETE PAVEMENT

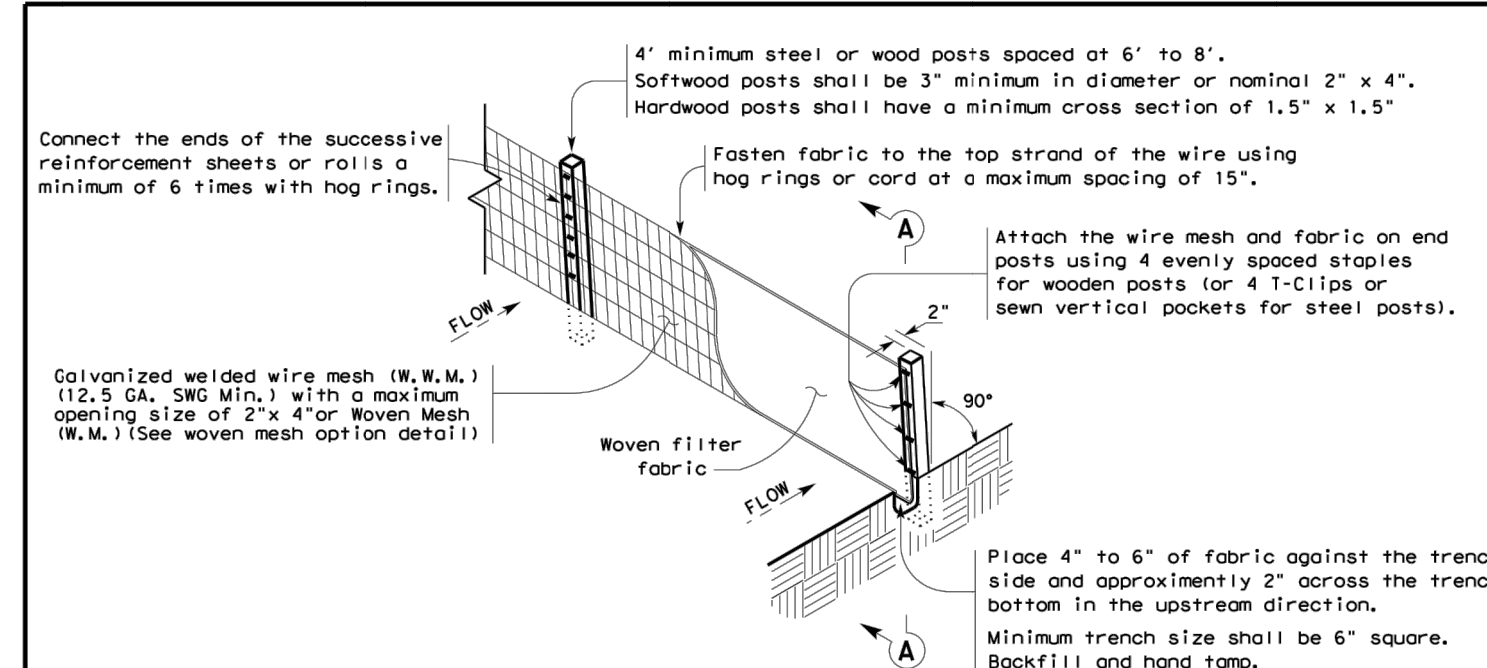


PLAN VIEW - EXPANSION JOINTS ON CONCRETE CURB AND GUTTER (FORM LAID OR MACHINE LAID)

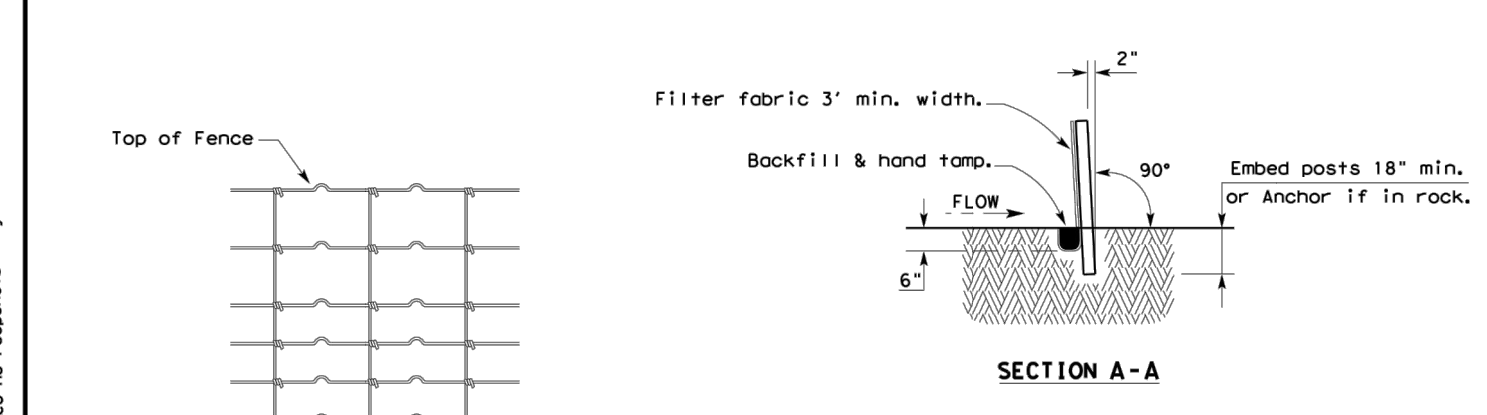
**4 CONDUIT SECTION DETAIL**  
SCALE: N.T.S.



DISCLAIMER: This document is prepared by the "Texas Engineering Practice Act". No warranty of any kind is made by TCEC for any purpose whatsoever. TCEC assumes no responsibility for the construction of this structure or for its operation or for its safety or for its stability or for its performance.



TEMPORARY SEDIMENT CONTROL FENCE



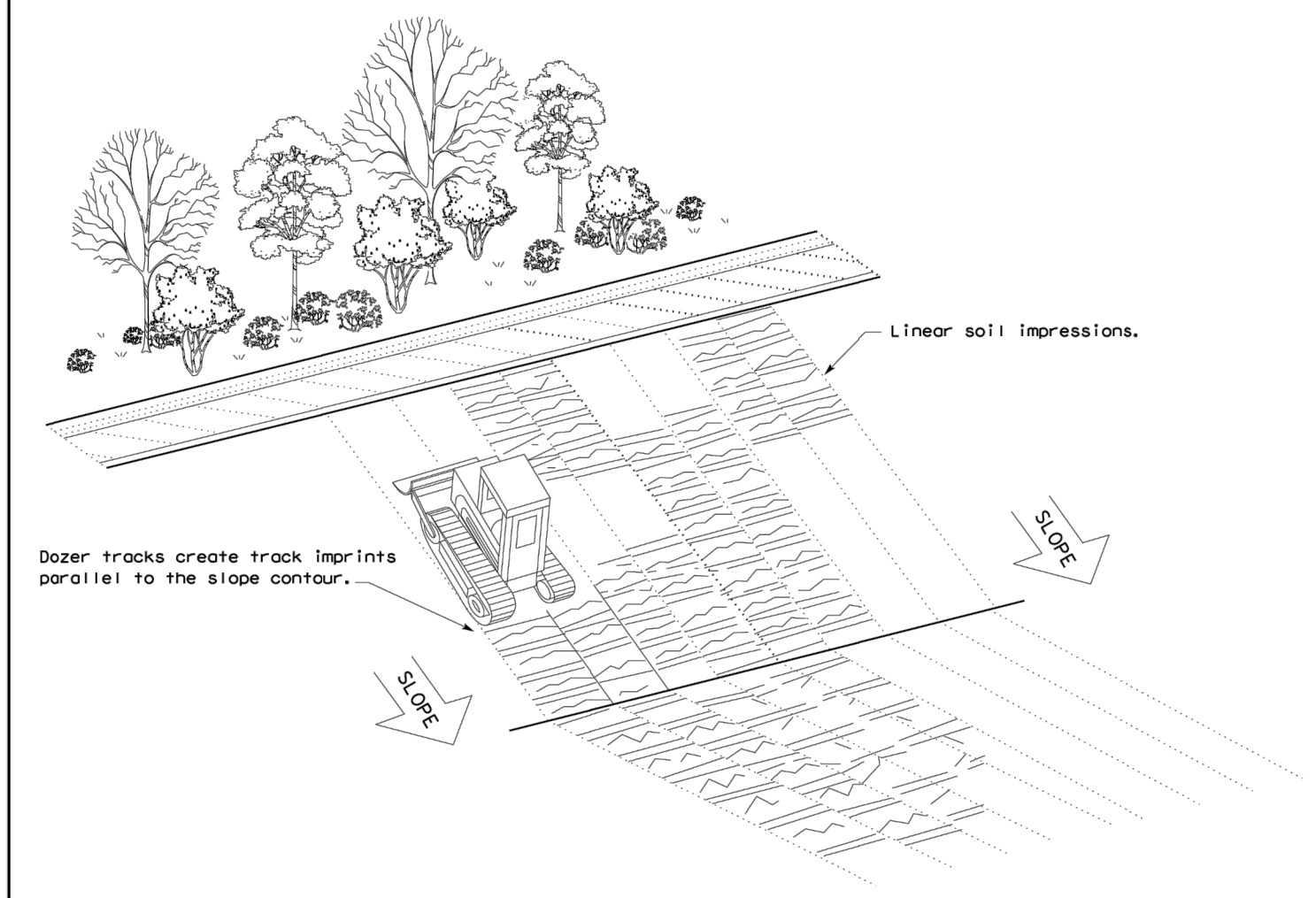
HINGE JOINT KNOT WOVEN MESH (OPTION) DETAIL

Galvanized hinge joint knot woven mesh (12.5 GA, 5/16 Min.) requires a minimum of five horizontal wires spaced at a maximum of 12 inches apart and all vertical wires spaced at a maximum of 12 inches apart.

**SEDIMENT CONTROL FENCE USAGE GUIDELINES**  
A sediment control fence may be constructed near the downstream perimeter of a disturbed area along a contour to intercept sediment from overland runoff. A 2 year storm frequency may be used to calculate the flow rate to be filtered.  
Sediment control fence should be sized to filter a maximum flow through rate of 100 GPM/FT<sup>2</sup>. Sediment control fence is not recommended to control erosion from a drainage area larger than 2 acres.

LEGEND  
Sediment Control Fence

- GENERAL NOTES**
- Vertical tracking is required on projects where soil distributing activities have occurred unless otherwise approved.
  - Perform vertical tracking on slopes to temporarily stabilize soil.
  - Provide equipment with a track undercarriage capable of producing linear soil impressions measuring a minimum of 12" in length by 2" to 4" in width by 1/2" to 2" in depth.
  - Do not exceed 12" between track impressions.
  - Install continuous linear track impressions where the minimum 12" length impressions are perpendicular to the slope or direction of water flow.



VERTICAL TRACKING

Texas Department of Transportation  
Design Division Standard

**TEMPORARY EROSION, SEDIMENT AND WATER POLLUTION CONTROL MEASURES FENCE & VERTICAL TRACKING**  
EC(1)-16

FILE#	80316	REVISED	CON NO.	CON 10	DATE	08/14/15
DATE	12/07/16	CON	REV	JOB	NO.	100001
REVISIONS						
DATE		COUNT		COUNT		SHEET NO.

PROJECT	E0668600	
PLANT DATE/TIME	5/14/2021 1:36 PM	
STATUS	100% SET	
DRAWN BY	O.A.R.	
CHECKED BY	J.F.G.	
NO.	DATE	REVISION DESCRIPTION
FILE		E0668600_DETAILS.dwg
AREA 1		
AREA 2		

**CIVIL ENGINEERING CONSULTANTS**  
1700 Luraco, Texas, 78041  
TEL: 956-729-7844 FAX: 956-729-7854  
TBPE # F-2214 TBPS # 100410-00

**LHA- ADMINISTRATIVE CAMPUS PARKING LOT**  
DETAILS

STATE OF TEXAS  
EDWARD L. OCHOA  
92596  
05/14/2021

S:\data\Proj\_2021\E0668600\_LHA-Administrative Campus\load\E0668600\_DETAILS.dwg